

Realize the benefit of eConsults,
directly through Epic

Available from the App Orchard Marketplace,
AristaMD's eConsult platform delivers an
embedded solution to empower fast specialist
collaboration and improved patient care.

eConsult requests can be initiated from any EHR

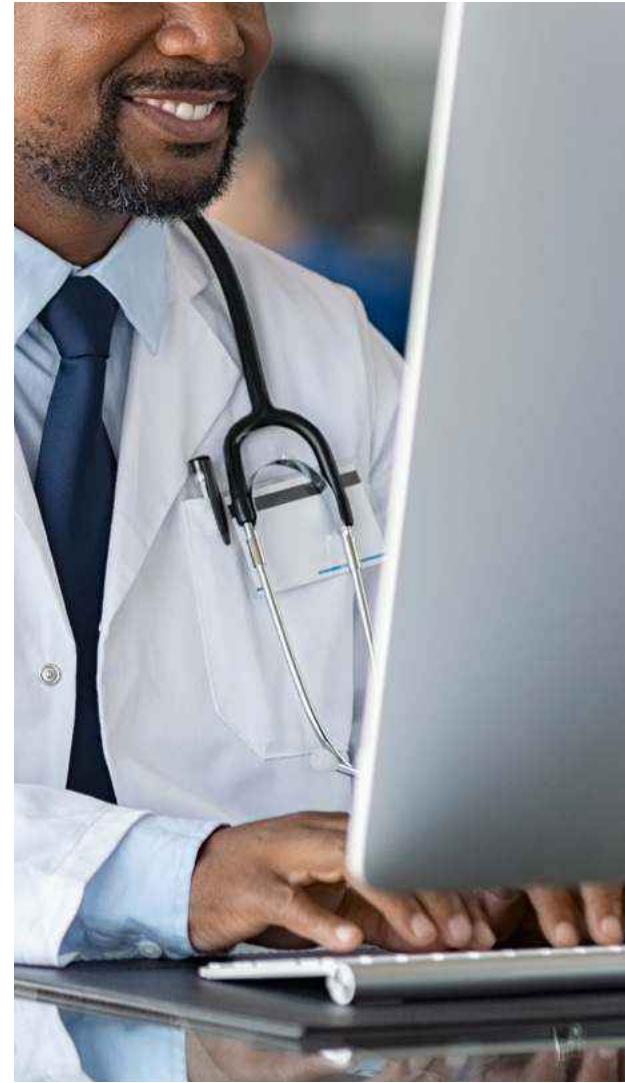
All correspondence between the requesting provider and specialist are added
as a finalized encounter in the Epic patient chart

AristaMD leverages SMART on FHIR authentication to authenticate specialist
users, for embedded access and management

eConsults can be routed to a single specialist or a pool of specialists within Epic

Automatic reminder notifications and administrative dashboards ensure
eConsult completion within specified timeframes

Quality scores for every eConsult ensure program integrity



To learn more about eConsults, visit apporchard.epic.com/Gallery
Click "AristaMD", then "Contact Author".



**Specialists receive eConsult requests directly to In Basket –
no need to leave Epic to reply.**

For more information or to
request a demo, contact us at
info@aristamd.com

858.750.4777
www.aristamd.com

